

INSTALLING HAND RAILS

- 12** There are three (3) Railing that surround the ADA Platform. (See image **P**) The Railings are stored on the roadside of the trailer along with the Ramp as noted earlier. (See separate Ramp Transit Instructions for more information.) Remove the star grip thumb knob from the bottom of each Railing by twisting counter-clockwise. Insert railing leg into receiver tube located on ADA Platform. Each Railing has unique leg spacing so you cannot mix them up. Reinsert star grip thumb knob and twist clockwise to tighten. There is no need to overtighten. (See image **Q**)



- 13** That completes the ADA Platform Ramp set-up. To dismantle, follow the same steps, but in reverse. Replace all components to their original storing locations whether it be the Maintenance Closet or Ramp Storage located on roadside of trailer.

! **IMPORTANT:** Read all instructions thoroughly before proceeding. In no event shall American Cargo Group (manufacturer of UltraLav) be liable for any direct, indirect, punitive, incidental, special consequential damages, to property or life, whatsoever arising out of or connected with improperly setting up ADA Platform/Ramp, or the use or misuse of our products.



This image depicts how the UltraLav ADA Mobile Restroom Trailer should look once totally assembled.

FOLLOW INSTRUCTIONS CAREFULLY. For questions, call **(254) 495-2183** or email customerservice@ultralav.com

ADA RESTROOM/SHOWER TRAILER SET-UP INSTRUCTIONS

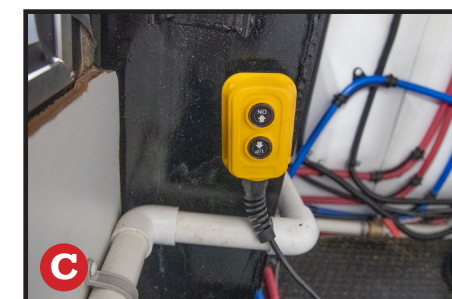
OVERVIEW

Setting up your UltraLav ADA Mobile Restroom Trailer is simple and should take no longer than 30 minutes with some practice. These step-by-step instructions specifically address the ADA Restroom/Shower related set-up and installation components. Please refer to the standard UltraLav Operating Manual when directed.

- 1** Before parking your trailer, inspect the site location carefully. Consider the traffic flow, the direction the doors should face, adequate room for the platform/ramp, access to electricity and water, etc. A suitable site should be flat with adequate drainage.
- 2** Position trailer on the site location. Temporarily chock the wheels. Unhook trailer from town vehicle. Use a padlock (on hitch latch lever) or other hitch lock device to prevent theft.
- 3** Lower the front end of the trailer by cranking the A-Frame Jack Ram as low as possible. (See image **A**) Make sure Safety Chains and Breakaway Cable are not under the A-Frame. (See image **B**)



- 4** The Hydraulic Pump Control Switch is located inside Maintenance Closet. (See image **C**) Tap the "UP" button to pressurize the system. This takes the weight off the Suspension Lock Pins. (See image **D**)



ADA RESTROOM/SHOWER SET-UP

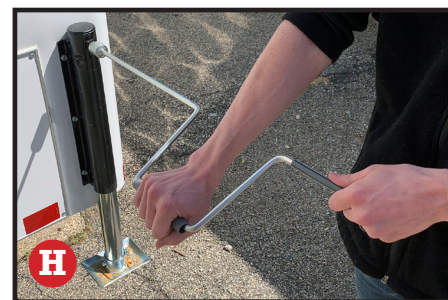
LOWERING THE TRAILER

- 5** Remove Safety Pin that secures the Suspension Lock Handles in place. (See image **E**) There are two (2) Suspension Lock Handles located over each fender. Remove both. You may have to tap the Hydraulic Pump Control Switch UP/DOWN to release Suspension Lock Handles. Both Suspension Lock Latches **MUST BE** removed before attempting to lower trailer on the next steps. (See image **F**) Keep Suspension Lock Handles and Safety Pins in a safe location — they will be required after event for reassembly and transport.



- 6** Be sure area under trailer is clear — remove chocks if necessary. Keep feet away from edge of trailer. Using the Hydraulic Pump Control Switch press the “DOWN” button until entire trailer is completely lowered and flush with ground. Note: Because of the independent axle system, the trailer may lower unevenly and tilt to one side. **THIS IS NORMAL** and **TEMPORARY**. Once completely lowered to the ground, the trailer will level itself out. The lowering process may take 30 seconds or longer.

- 7** Located on each corner are four leveling jacks. (See image **G**) A manual 9/16” wrench is included with the trailer and can be found in the maintenance closet. (See image **H**) A ratchet wrench or cordless drill (not included) may also be used and is usually faster and easier. Level unit side-to-side and front-to-back. Use bubble levels on each side of the trailer as guides. Keep in mind the leveling jacks are meant to make minor adjustments and add stability. Leveling jacks are not meant to raise the trailer significantly off the ground on uneven surfaces. **NOTE:** On ADA Shower models, the curbside front corner must be slightly elevated (higher) than the rest of the trailer for the shower pan to drain thoroughly.



IMPORTANT: Both Suspension Lock Latches **MUST BE** removed before attempting to lower trailer to the ground. Keep both Suspension Lock Latches and Safety Pins in a safe location. They will be required for reassembly and transport.

LOWERING THE SIDE PLATFORM RAMP

- 8** The Platform Control Switch is located in the small locked compartment to the right of the ADA Platform. Tap the “DOWN” button to release the tension on the ADA Platform Strap. (See image **I**)
- 9** Release the Locking Bolt on the Security Latch. (Keep bolt/nut in a safe location.) The ADA Platform will swing down slightly until the slack is removed and the strap carries the load. (See image **I**)



- 10** Continue pressing the “DOWN” button on the ADA Platform Control Switch to lower the ADA Platform to a 45° angle. (See image **K**) Insert the four (4) Landing Pads (located inside Maintenance Closet) so the pads face down — reinstall pins. (See image **L**) Continue to lower the ADA Platform all the way to the ground. Adjust each Land Pad so the ADA Platform is level. Remove the strap and retract until the hook protrudes slightly from the feed roller. **DO NOT RETRACT TOO FAR.** (See image **M**)



- 11** Two people are recommended for this step. The Ramp is stored on the roadside of the trailer. (See separate Ramp Transit Instructions for more information.) Position Ramp as shown. (See image **N**) The Ramp slides under the ADA Platform. Align pilot holes and insert pin on both sides of Ramp. (See image **O**)

