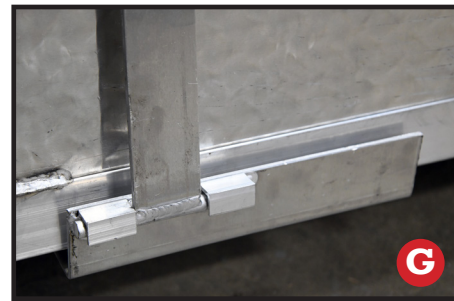


STEP 5



Center ADA ramp on Base with top side facing toward trailer. See image **F**.



Similar to Step 4, insert “T” end of **Security Bar Clamp** (long) into keeper notch on **Base**. See image **G**. Maintaining tension, slide **Security Bar Clamp** over ADA ramp and secure with **Jeep Latch**. Repeat on opposite side. See image **H**.

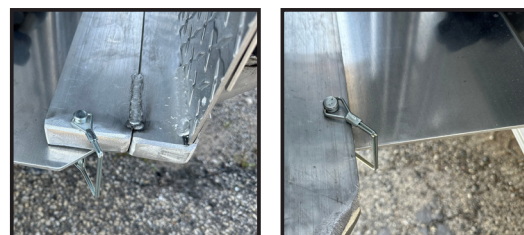


IMPORTANT: When properly secured, there should be ample tension on **both Security Bar Clamps** with little to no movement of the **ADA Ramp**. See image **H**. Re-secure Bar Clamp if this is not the case.

Final Step: Insert Ramp Transit Safety Pin on each side of the ADA Ramp as shown. See image **I** and **J**.



Jeep Latch



Ramp Transit Safety Pin



IMPORTANT: Until the **Security Bar Clamps** are latched, the railings & ADA ramp may be unstable and fall over. Maintain gentle pressure to components as you progress through the steps.

ADA RAMP TRANSIT PREPARATION INSTRUCTIONS

COMPONENTS



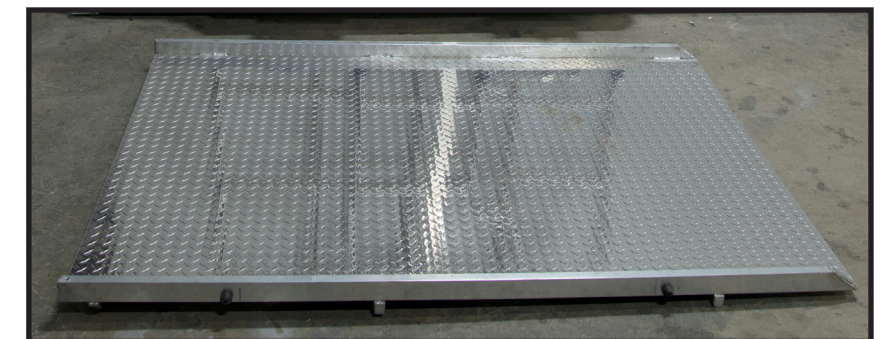
Long Railing (1)



Medium Railing (1)



Short Railing (1)



ADA Ramp (1)



Security Bar Clamps (2 Long & 1 Short)



IMPORTANT: Read all instructions thoroughly before proceeding. In no event shall American Cargo Group (manufacturer of UltraLav) be liable for any direct, indirect, punitive, incidental, special consequential damages, to property or life, whatsoever arising out of or connected with improperly stowed components, or the use or misuse of our products.

FOLLOW INSTRUCTIONS CAREFULLY. For questions, call (254) 495-2183 or email customerservice@ultralav.com

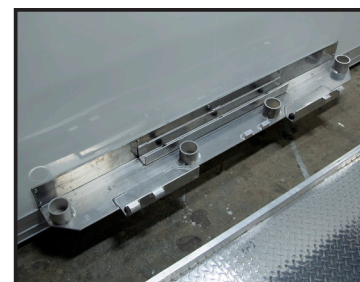
TRANSIT PREPARATION

LOCATION

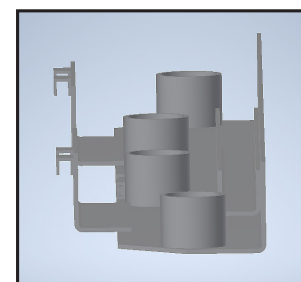


Unloaded View

The transit location for the ADA Ramp Components is usually on the front exterior wall of the trailer. In some cases, when the trailer is upgraded with 40 lb. LP Tanks, the transit location is on the road side (toward the front) of the trailer. You will find three (3) Jeep style latches, three (3) bumper pads, one (1) c-channel guide, and a base.



Base (Top View)



Base (Side View)

STEP 1



As you progress through the steps, you are working inside-to-outside. The Long Railing fits into the c-channel guide closest to the trailer.

Place **Long Railing** (vertically) in the c-channel guide on the **Base**. Center tube fits into c-channel guide on the wall. Railing "feet" should face to the right. Railing should lay flat against the trailer exterior wall. See image **A**.

STEP 2



Place **Medium Railing** (vertically) in the c-channel guide on the **Base**. Railing "feet" should face to the left. See image **B**.

ASSEMBLY (continued)

STEP 3



Place **Short Railing** (vertically) in **Base**. Insert "feet" into centermost round cups in **Base**. See image **C**.

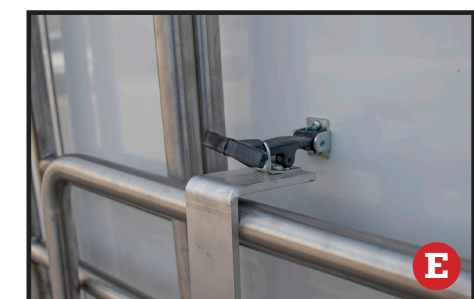
STEP 4



Insert "T" end of **Security Bar Clamp** (short) into keeper notch on **Base**. See image **D**. Maintaining tension, slide **Security Bar Clamp** over railings and secure with **Jeep Latch**.



IMPORTANT: When properly secured, there should be ample tension on Security Bar Clamp with little to no movement of the railings. See image **E**. Re-secure Bar Clamp if this is not the case.



Jeep Latch